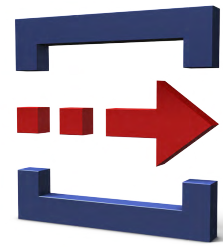


# [ OM Plus ]

## Output Management & Distribution



Most companies use home-grown tools and standard applications such as ERP systems for the large-scale production of reports and documents.

**The output data is normally channeled through the standard spooling systems of the respective operating system for transport and output on a device – in most cases a printer. However, the standard spooling systems of neither Unix nor Windows are designed for handling the administration, transport and output of large volumes of reports and documents with the reliability required for production. This holds especially for complex networks.**

**These inadequacies frequently cause problems in managing and handling the company's document distribution system, adversely affecting overall system reliability. To begin with, most standard systems do not issue a message confirming whether a job is being printed. Also, they can't handle electronic forms, and documents are lost (e.g. after device errors) or output incorrectly and at the wrong time.**

### OM Plus – What it offers

OM Plus was designed to support as many aspects of the report distribution process as possible. In addition, distribution processes can be targeted to many other media beside the printer, such as e-mail, fax or the Web.

- OM Plus is a consistent system that offers the same functions on all common server platforms, including Unix, Linux and Microsoft servers.
- It can be configured as a print server or on application servers.
- OM Plus is robust and efficient. What makes OM Plus stand out from other management systems designed for company-wide operation is its ease of installation and use.

### OM Plus – At a glance

OM Plus delivers a broad set of functions for managing and distributing reports and documents. This includes their delivery to a wide range of different destinations such as printers, fax, e-mail and Internet/intranet sites. The solution readily supports complex networks and increases transparency for users.

RD Plus is a module of the OM Plus system. It expands OM Plus by adding functions for splitting up output jobs into sections and distributing these.

Report Bundler Plus now comes into play, compiling sections from different reports into a new print job. The information package generated in this fashion is then distributed to the designated recipients or destinations.



Output Management – A definition

Output management refers to the process of distributing the right document in the right format to the right recipient at the right time across platform boundaries within the company (internal), between companies (B2B) or between companies and customers (B2C) in a highly efficient and reliable manner, followed by document archiving.

No changes to applications – Certified for SAP/R3

OM Plus does not require any modifications of the host applications as it replaces, or rather coexists with, the print subsystem (spooling system) of the operating system. Whenever an application calls up functions of the spooling system, OM Plus steps in and takes control. The application takes care of printing – OM Plus handles everything else.

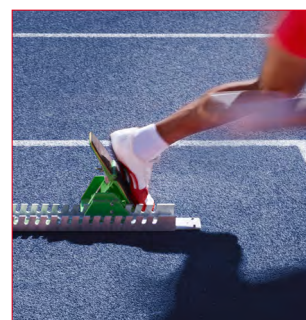
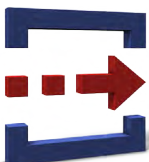
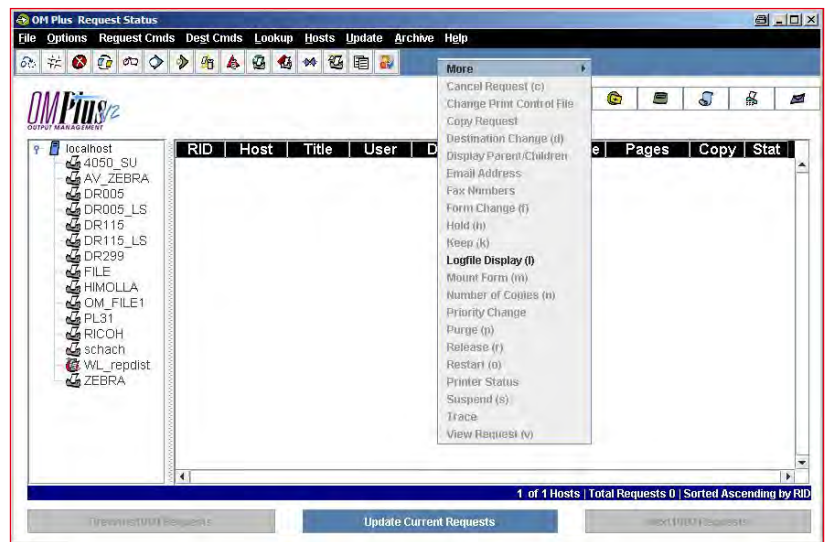
OM Plus is compatible with a large number of ERP systems, including R/3 from SAP. OM Plus is certified for use with R/3 (BC\_XOM).

Functions and features

OM Plus satisfies various output management needs and requirements for internal and external distribution of the reports:

- Built-in document distribution to e-mail, fax and the Web; it is managed based on individual data contained in the documents or using spool file information.
- In the event the OM Plus main server should fail, jobs are rerouted to a backup server.
- Every job output is confirmed.
- A notification is sent if a printer or job output fails or during any other defined event. It can be delivered via e-mail or pager; also, the job can be rerouted automatically.
- For PJI-compatible printers (PJI = Printer Job Language) OM Plus issues precise information about the success of functions performed; the status of the output devices can also be queried using SNMP.
- OM Plus is designed to support the operation of a large number of printers and vast volumes of print jobs.

Fig. 1: Job status: This overview shows the servers and devices as well as the current list statuses across all platforms. The commands offered in the highlighted window are available for the selected list (line highlighted in gray).



- Comprehensive audit logs account for all functions and print processes.
- OM Plus is controlled using a Web interface.
- Security features control access to functions, documents and devices. Access rights can be defined for individual users or groups.
- Data encryption is supported.
- Integrated job control and load balancing functions.
- Delayed job deletion to allow for reprinting.
- Built-in functions for restarting, rerouting and reprinting of jobs.
- Rich Content documents are supported – including output of page sections.
- Automatic compression/decompression to help reduce the network load.
- Automatic distribution of copies and partial documents (reports).
- Last but not least, it offers seamless integration with LaserSoft and DoXite, DETEC's products for professional formatting and document design.



Fig. 2: Main menu of the OM Plus system control: Icons and English labels facilitate intuitive use of the documents.

Subdividing and distributing printed reports is a highly tedious, time-consuming task in many companies. Yet dividing documents into different sections and distributing them throughout the company is important to ensure smooth daily business operations, and getting the information distributed quickly is essential in maintaining efficient workflows.

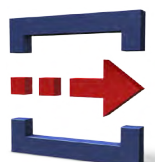
RD Plus, a module of OM Plus, facilitates the task of splitting up large reports into individual partial reports. This is done based on specific report data content. The partial reports can be directly delivered or output to a range of destinations, including printers, fax servers, and e-mail or Web server systems.

**On-target distribution of information – Reduced system load**

As partial reports are delivered directly to their recipients, it is not necessary to create multiple full reports or copies and distribute them manually or via the net.

RD Plus scans the report's content for specific descriptors and uses this information to divide it into parts as required. Descriptors can be anything including the content of whole pages, lines, positions, titles, keywords and character strings.

RD Plus makes sure that recipients only receive the excerpts from reports that are relevant to them – delivered in the format best suited to their needs: as a hardcopy, e-mail or fax. This saves recipients the hassle of searching for specific sections or paragraphs.



### Security features

Every partial report can be allocated an individual distribution profile. The associated profile determines the specific security features valid for a partial report or section.

### Bundling reports

The optional Report Bundler (RB Plus) allows users to compile sections from different reports into a new print job and distribute it.

### Controlling the process through report data

The optional Context Delivery Plus (CD Plus) product offers functions for modifying or setting job criteria based on the documents' contents. Criteria that can be modified include information such as the destination, number of copies, time variables, notifications. For instance, in the *wage slip* example below only a predefined printer may be used.

### Customer support

DETEC offers its OM Plus product family users a support hotline and DETEC-Professional Services, which cover a broad range of services from the areas of document presentment and output management.

## Event-driven functions – 6 examples

When output jobs enter OM Plus (Input Filter) or when data is output (Output Filter), predefined or custom-made scripts can control the output workflow.

1. Automatic distribution of reports according to specific criteria. For example, time stamps for an output job are automatically divided according to personnel numbers and mailed to employees or displayed via the HTML interface.
2. Collection of print jobs and scheduled printout of all jobs at a central printer. Example: Individual invoices that are generated during the day and are printed in the evening as a single job.
3. Modifying job criteria according to data contents. Example: The wage slip must be printed using a predefined printer.
4. Some printers may only be used by select users or limited access rights apply. Example: Output on color printers only granted to specific users (rights system).
5. Jobs interrupted due to hardware problems are automatically rerouted to a backup printer starting at the point of the interruption. The user is notified via e-mail.
6. Integrated accounting allocates print costs to departments/employees